

tracesecuritySM TraceAlertTM

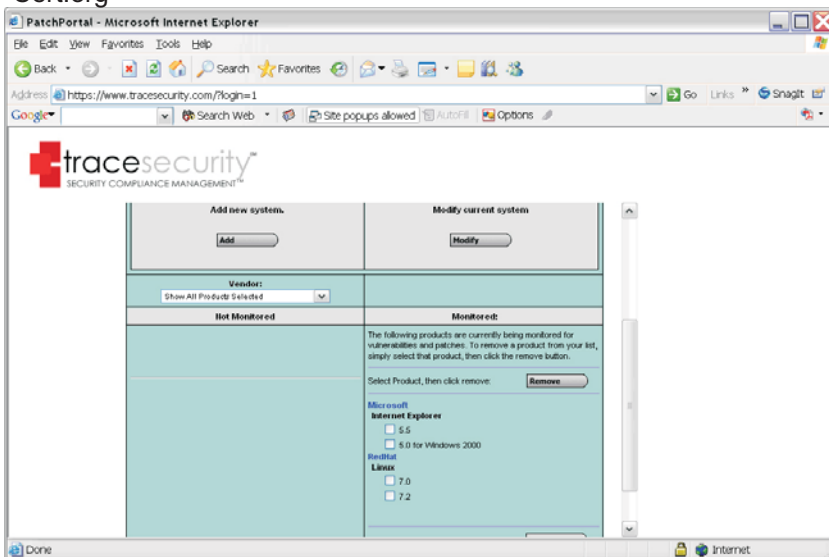
Go to www.tracesecurity.com to sign up for a free evaluation or call one of our representatives today for complete information at (225) 612-2121.

TraceAlert greatly reduces the time to research and respond to security vulnerabilities that affect your network environment. TraceAlert is a vulnerability and patch alerting service. Choose technologies that mirror your system infrastructure so you know what assets could be susceptible to vulnerabilities.

According to CERT*, there were 3780 vulnerabilities detected in 2004; this is an average of 72.6 per week. When a vulnerability is discovered, the TraceSecurity engineering staff immediately researches the threat, checks the validity, enters the information into the proprietary TraceAlert security engine and delivers specific, easy-to-understand security vulnerability information to the proper individual or group at the customer site.

TraceAlert dramatically increases your ability to maintain a secure network by delivering vulnerability information, in real-time and empowers the IT/security team to spend more valuable time mitigating patch-related vulnerabilities. Security managers are able to oversee progress at every level and generate detailed reports in seconds for any internal or external needs.

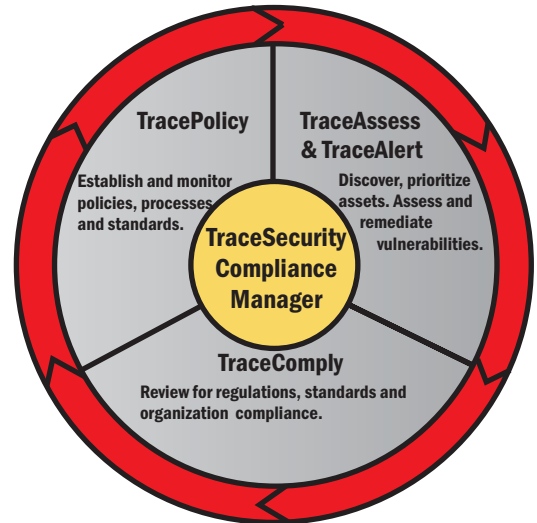
*Cert.org



TraceSecurity TraceAlert allows users to easily choose technologies that affect their network.



TraceSecurity Vulnerability & Compliance Lifecycle



Key Features of TraceAlert:

Customized alerts to your environment allowing you to choose technologies

Web interface so you can access anytime anywhere

Hierarchal architecture allowing for better management of security resources and enterprise support

Built-in reporting (pre-defined and custom templates) so you can easily understand whether you're an executive or an IT professional

Multi-user notification to ensure the proper individuals know what vulnerabilities could exist

Specific information on vulnerabilities in your network and resolution